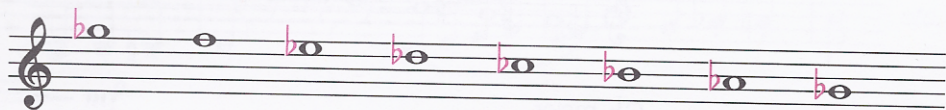


Exercise 1

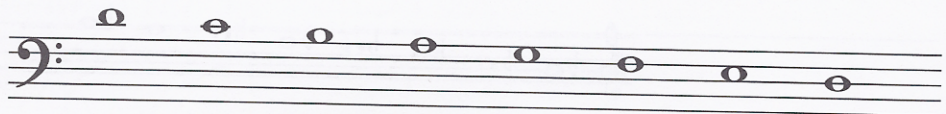
Add accidentals where necessary to make these scales. (Do not use key signatures.)

Example

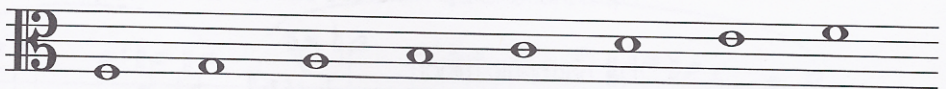
G \flat major



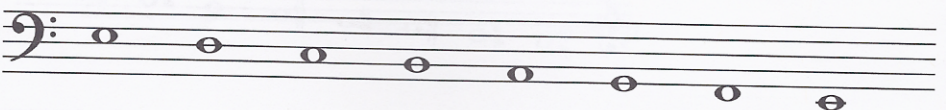
D \sharp harmonic minor



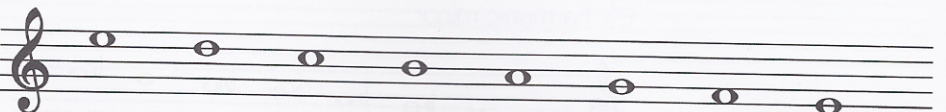
F \sharp major



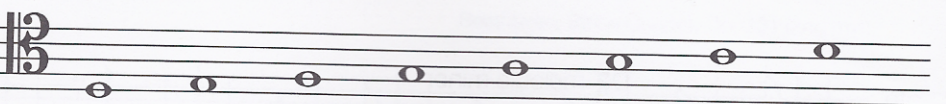
E \flat melodic minor



E \flat harmonic minor



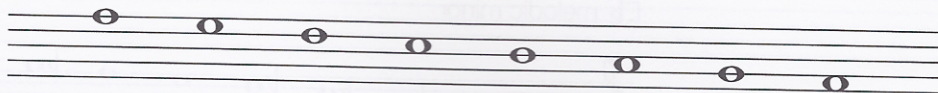
D \sharp melodic minor



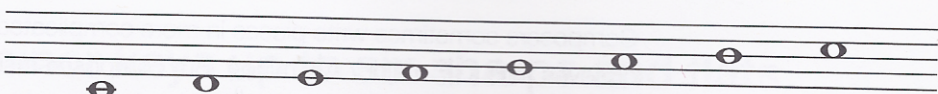
Exercise 2

Add the clefs and accidentals to make these scales. (Do not use key signatures.)

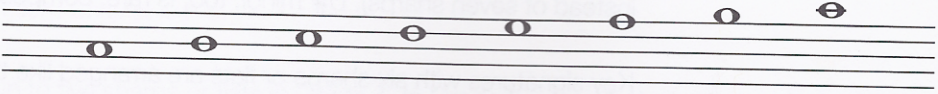
F \sharp major



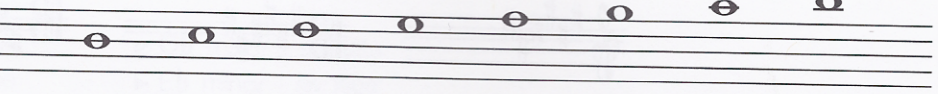
E \flat melodic minor



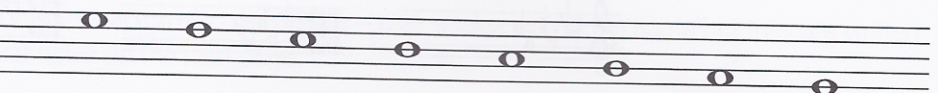
G \flat major



D \sharp harmonic minor



D \sharp melodic minor



E \flat harmonic minor

